



We can help
**with benefits
for your employees**

Introducing the **ICAS Benefit**
with your FNB Group Funeral Plan.



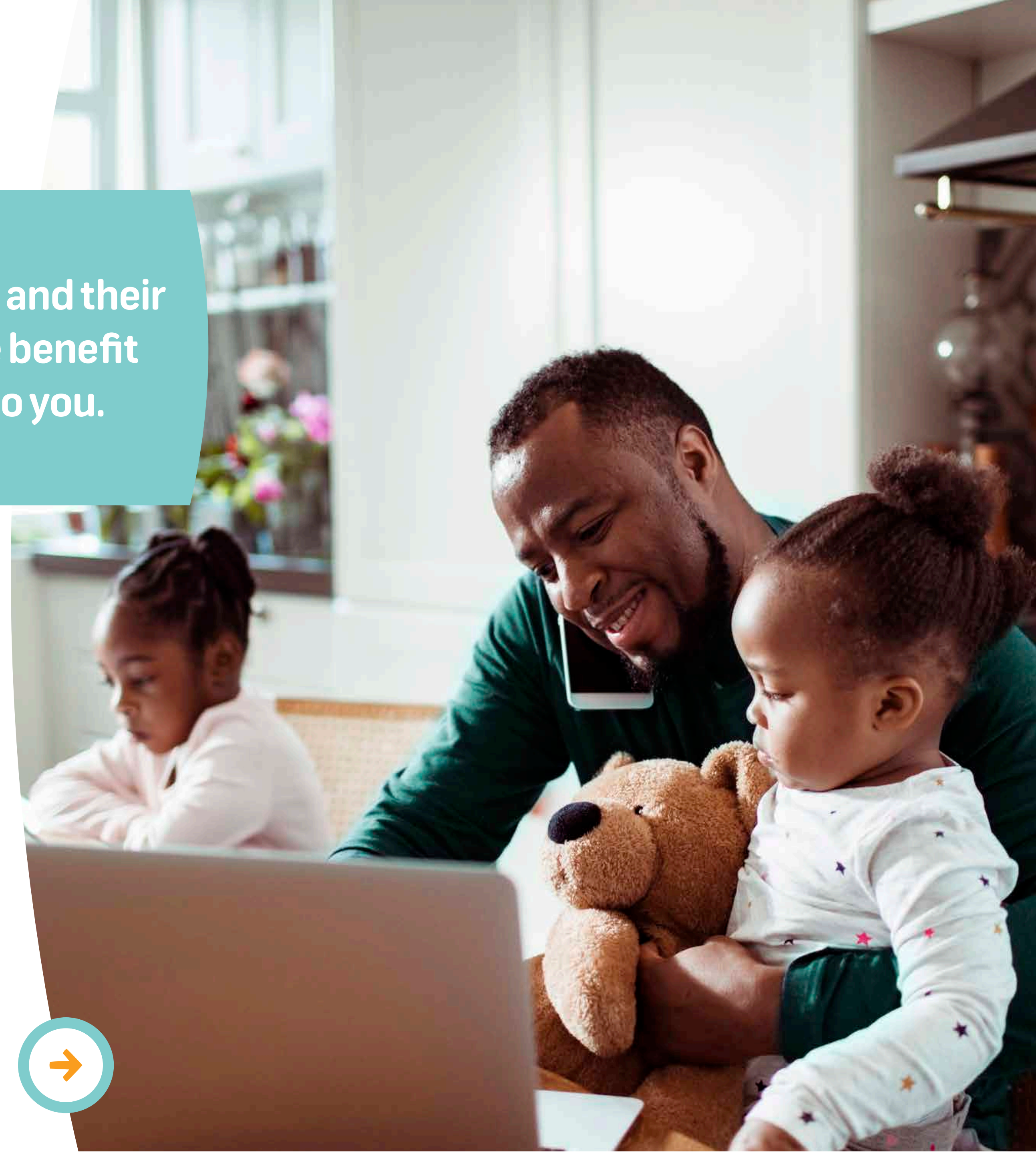


To further help you care for your valued employees and their wellbeing. We've included a counselling and advice benefit with your Group Funeral Plan at no additional cost to you.

- > The ICAS benefit is a counselling and advice benefit for you, your employees and their family's.

Not only does ICAS provide caring and supportive telephonic bereavement counselling, it also helps by providing you with unlimited telephonic advice and self-management tools to reduce stress, cope with relationships, health and other issues, improving morale and your overall wellbeing.

You, your employees and their families are guaranteed confidentiality and the service extends to your family members, helping everyone better navigate and work demands.





Benefits for your business



Attract and keep great employees



Professional legal, business and financial advice



Potentially reduce employee absenteeism



Confidentiality guaranteed



Potentially relieve a burden on your HR



Free – no additional charge to your EFP policy





Benefits for your business



Free telephonic counselling 24/7	Legal wellbeing	Financial wellbeing	Family care support	Health@Hand
<p>Dedicated line that provides confidential counselling and support:</p>	<p>Legal advisors provide unlimited telephonic advice on:</p>	<p>Financial mentors provide independent and objective advice on:</p>	<p>Access to a team of medical and legal professionals, as well as social workers and psychologists to provide advice and support on:</p>	<p>Medical experts provide lifestyle and life-threatening diseases advice and support:</p>
<p>• Assistance, in the language of your choice, by qualified professionals</p>	<ul style="list-style-type: none"> • Wills, testaments and estates • Pension • Taxation • Contracts • Property • Retirement • Third-party claims 	<ul style="list-style-type: none"> • Estate planning • Savings and investment • Financial tools • Tax returns 	<ul style="list-style-type: none"> • Childcare • Eldercare • Adoptions • Education and social benefits • Disability 	<ul style="list-style-type: none"> • Heart disease • Chronic illnesses • Parenting support • Cancer • Weight loss resources • HIV/AIDS counselling and support services
<p>Available 24/7 - 365 days</p>	<p>Mon-Fri: 8:00-17:00 Sat & Public Holidays: 8:00-18:00</p>	<p>Mon-Fri: 8:00-17:00</p>	<p>Available 24/7 - 365 days</p>	<p>Available 24/7 - 365 days</p>

